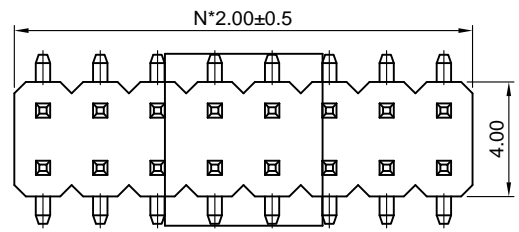


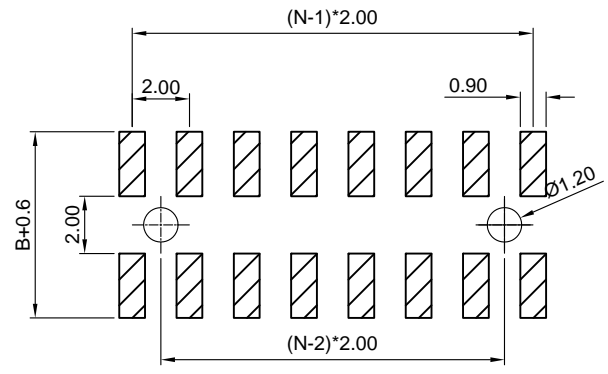
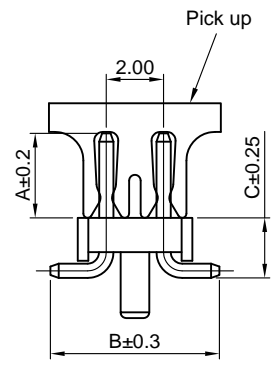
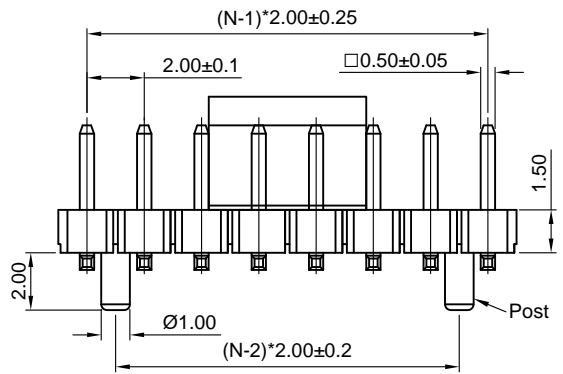
Dept	
Qty	
DC	1
ED	1
IE	1
ISO	1
PD	1
R&D	1
SD	1
QA	1
QC	1
QF	1

The information provided herein is from CONNELY Electronic Co., Ltd. and is confidential. Any disclosure to a party other than the recipient is prohibited. The intellectual properties and its rights contained herein, including but not limited to, trademarks, patents, copyrights, trade secrets, and technical know-how, are owned exclusively by CONNELY or its affiliates. Unauthorized use or reproduction of any part of this document is strictly prohibited. CONNELY may enforce its intellectual property rights at its own discretion, failures or delays to exercise such rights does not constitute a waiver of such rights.

REV.	DESCRIPTION	DRAWN	CHECKED	APPROVED
A	NEW RELEASE	JLZ 11/30/20'		



N=No.of contacts/2



Recommend PCB Layout  
(Tolerance=±0.05)



(Series Image-Reference Only)

Notes:

Specifications:

- Contact Resistance: 20mΩ Max.
- Insulation Resistance: 1000MΩ Min.
- Dielectric Withstanding Voltage: 500V AC(rms) For 1 Minute.
- Current Rating:1.5A.
- Temperature: -40°C~+105°C.

Materials:

- Contact Material: Copper Alloy.
- Contact Plating: Gold Plating Over Nickel.
- Insulator Material: High temp,Black,UL94-V0.

Product Number Code:

DS1025-21 - X X X X X X X - X

- Plating level
- 3A: Level 3A
- B: Level B
- Dim.A B C type
- A\*.\*-B\*.\*-C\*.\*
- Post support
- S: W/ Post
- X: W/O Post
- Packing type
- B: Tube
- R: Tape on reel
- Pick up support
- S: W/ Pick up
- X: W/O Pick up
- Housing color
- B: Black
- Contact plating
- 8: Full gold flash
- Connector type
- P: Plug
- No.of contacts
- 2x2-2x40

GENERAL TOLERANCE		ANGLE TOLERANCE	
X.	±0.60	X.	±5°
.X	±0.38	.X	±3°
.XX	±0.25	.XX	±2°
DRAWING TYPE		CUSTOMER	
SCALE	1:1	SHEET	1 OF 1
DRAWING NO.	C-DS1025-21-XXXXXX-X-A		

PROJECTION	TITLE
	2.00mm Pin Header SMT Type
UNITS	mm
SHEET SIZE	A4
SERIES	DS1025-21 SERIES

**晨翔电子有限公司**  
CONNFLY CONNELY ELECTRONIC CO. LTD